

安全使用注意事项  
Safe utilization and the regulations



1. 使用前请仔细阅读使用手册，并按使用手册指示操作发球机。
2. 儿童需在成人指导下使用。
3. 室外使用时，须避免在风沙和雨雪环境下进行。
4. 移动或调节发球机，请小心轻放，慎防发球机跌落。
5. 发球机工作时，请勿触及摩擦轮和储球器内拔条。
6. 发球机工作时，请勿与出球口近距离正面接触，防止乒乓球射出伤及人体。
7. 发球机工作时，如闻到异味或冒烟等非正常现象，请立即停机及拔开电源插头，请具有维修资格人员检修。
8. 使用结束，请关机并拔开电源插头。

1. Please read the instruction manual carefully before using the robot, and follow the instruction to operate the robot.
2. Instructive advice should be given when machine used by children.
3. Avoid the windy and rainy day for the outdoor use.
4. Please be careful when you move or adjust the robot to prevent it from falling down.
5. When the robot is operating, please don't touch the friction wheel, poke bar either.
6. When the robot is operating, please keep away from the Shooting head of the robot to avoid the ball harm the body.
7. When the robot is operating, if you found something abnormal, such as some smoke come from the machine, please stop the robot and unplug it immediately. Repair or service must be performed by a qualified repair person.
8. Turn the power switch off and unplug the robot after use.

本公司有权未经事先声明对本手册中的产品描述进行改进。  
The company has the right to amend the description of products in this manual without any notice in advance.

## 发球旋转的选择 Spin selection

选择旋转的时候，按机头上的指示牌摆动机头，选择您所需的旋转，对准三角标点。机头可正反180度旋转，请注意机头的电线，不能拉得太紧，以免拉断。



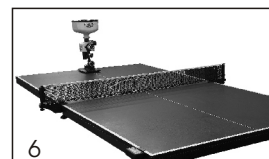
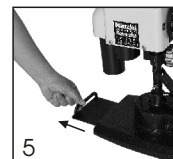
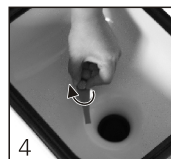
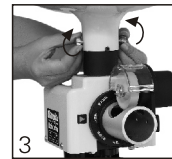
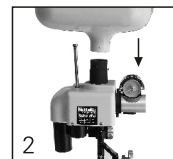
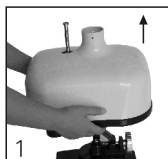
To select the spin, rotate the motor head to the appropriate position according to the spin indicator. The motor head is able to rotate clockwise and counter-clockwise in 180 degree. Please do not pull the wire too tight to prevent the breaking of wire.

## 使用电压 Operating voltage

根据各个国家、地区的不同情况，发球机的主机上有铭牌明确标注。请确认清楚，以免损坏。另外，练习结束后，请关机并拔开电源插头。

Every countries should have their operating voltage. Make sure the voltage which shown on the machine body is suitable for your countries, so as to avoid damage to the machine. When the exercise is over, switch off the robot and unplug the power.

## 发球机的安装和摆放 Machine installation and placement



储球器向上垂直拔出（图1）。然后对准定位槽插入（图2），锁紧两粒储球器螺钉（图3）。锁紧储球器内拔条（图4）。安装完成。将发球机摆放在球台近底线的台面中间，拉出活动板，只限加强型有此配件（图5）。控制盒支架安装在已方球台边，把控制盒插入支架固定（图6）。

Pull out the ball container vertically (Picture 1). Aim to the position locating slot, and then insert the ball container (Picture 2), tighten the container lock on both side (Picture 3). Tighten the poke bar inside the ball container (Picture 4). Installation completed! Place the robot in the middle area and close to the edge of table, and pull out the removable plate, only advanced model has this part (Picture 5). Install the control box's support on the edge of player side and insert the control box into the support (Picture 6).

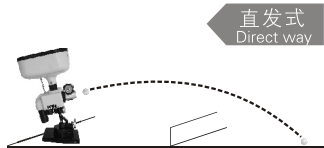
## 速度/频率调节 Speed/frequency adjustment

发球机的发球速度及频率都由控制盒的按钮进行调节，按“+”键就快，按“-”键就慢，各分9档，1档最慢，9档最快。出球频率约在28–85球/分钟范围内调节。控制盒具备记忆功能，停机或切断电源后都可保存上一次设置的参数。（控制盒上的开始/暂停键，无切断电源功能。使用完毕请拔开电源插头断开电源）。

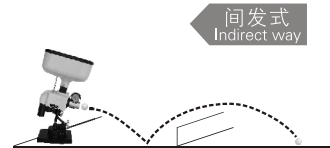
控制盒  
Control box



The speed and frequency can be adjusted by pressing the button on the control box. Press “+” to increase or up, press “-” to decrease or down. There are totally 9 stage level. Stage “1” is the slowest and stage “9” is the fastest. The frequency can be selected in the range of 28–85 balls/min. The control box has a memory function that memorize the current setting which is capable to play with the same setting as next time you start. (The “start/pause” button on the control box does not have the “power-off” function, the power needs to be unplugged manually after the exercise is over)



直发式  
Direct way



间发式  
Indirect way

## 发球形式及出球弧度的调整 Ways to serve the ball&loop adjustment

发球机的发球形式分为直发式和间发式，直发式发出的球旋转、速度都比间发式稍强，调整过程同选择出球弧度一样，使用“弧度调节旋钮”来进行，向左边旋时，出球口向上，向右边旋时，出球口向下，可在运行中调整。

弧度调节旋钮  
Loop adjustment knob



The robot can be set to serve the ball directly or indirectly over the net. A ball served directly carries stronger spin and higher speed. Turning the loop adjustment knob clockwise will result in the shooting pipe pointing higher, thus producing ball served directly. Whereas counterclockwise will result in shooting pipe pointing downwards, thus producing ball served indirectly. These adjustments can be done while the robot is running.

## 发球角度的调节 Angle adjustment

调整发球角度的时候，可通过“角度调整旋钮”进行调整，向右边旋时出球角度就大，向左边旋时出球角度就小，向左边旋到尽时发出的球是定点，可在运行中调整。



角度调节旋钮  
Serve angle adjustment knob

The serve angle can be adjusted by rotating the “Serve angle adjustment knob”. Turn counter-clockwise to have smaller serve angle and turn clockwise to have bigger serve angle. Turn the knob all the way to the left (counter-clockwise) to make the ball serve to the fixed position. The adjustment can be done while the robot is running.

# V-981

## 乒乓球发球机使用手册

INSTRUCTION MANUAL FOR TABLE TENNIS ROBOT

## 乒乓球发球机 Table tennis robot



使用前请阅读此手册

Please read this manual before operation